



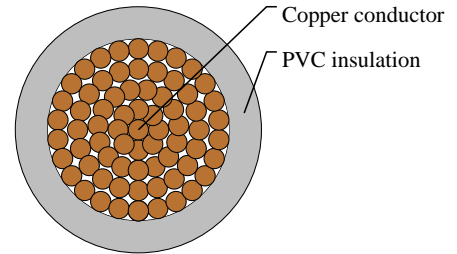
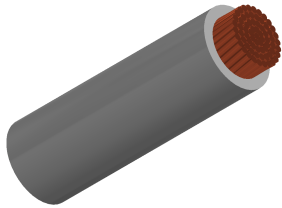
Caledonian

Automotive Cables

www.caledonian-cables.com

marketing@caledonian-cables.com

AV 1C30



APPLICATIONS

This PVC insulated single-Core cable is used for low voltage circuits in automobiles, vehicles and motorcycles.

STANDARDS

JIS C 3406

CABLE CONSTRUCTION

Conductor: Cu-ETP1 bare according to D 609-90

Insulation: PVC

Standard Compliance: JIS C 3406

PHYSICAL AND THERMAL PROPERTIES

Operating temperature: -40°C to $+85^{\circ}\text{C}$

Intermittent temperature: 120°C

DIMENSION AND PARAMETERS

No. of Cores × Cross- sectional Area	No. and Dia. of Wires	Diameter of Conductor (max.)	Nominal Insulation Thickness	Overall Diameter (min.)	Overall Diameter (max.)	Approx. Weight	Electrical Resistance at 20°C (max.)
No. × mm ²	no./mm	mm	mm	mm	mm	kg/km	MΩ/m
1×30.0	70/0.80	8	1.4	10.8	11.5	384	0.52